

KCP60ZS225



■ Boom specifications

Vertical reach	59,5 M	(195' 4")
Horizontal reach	55,9 M	(183' 4")
Reach from front of truck	52,9 M	(173' 6")
Unfolding height	12,4 M	(40' 10")
Section articulation	92° /180° /215° /180° /210°	
Rotation	370°	
Delivery line	125 mm	(5")
Proportional boom	Yes	
End hose length	4 M	(13')
Outrigger spread-front	11,8 M	(38' 9")
Outrigger spread-rear	16 M	(52' 8")
Max outrigger weight	45,000 kg	(99340 lbs)

■ Pump specifications

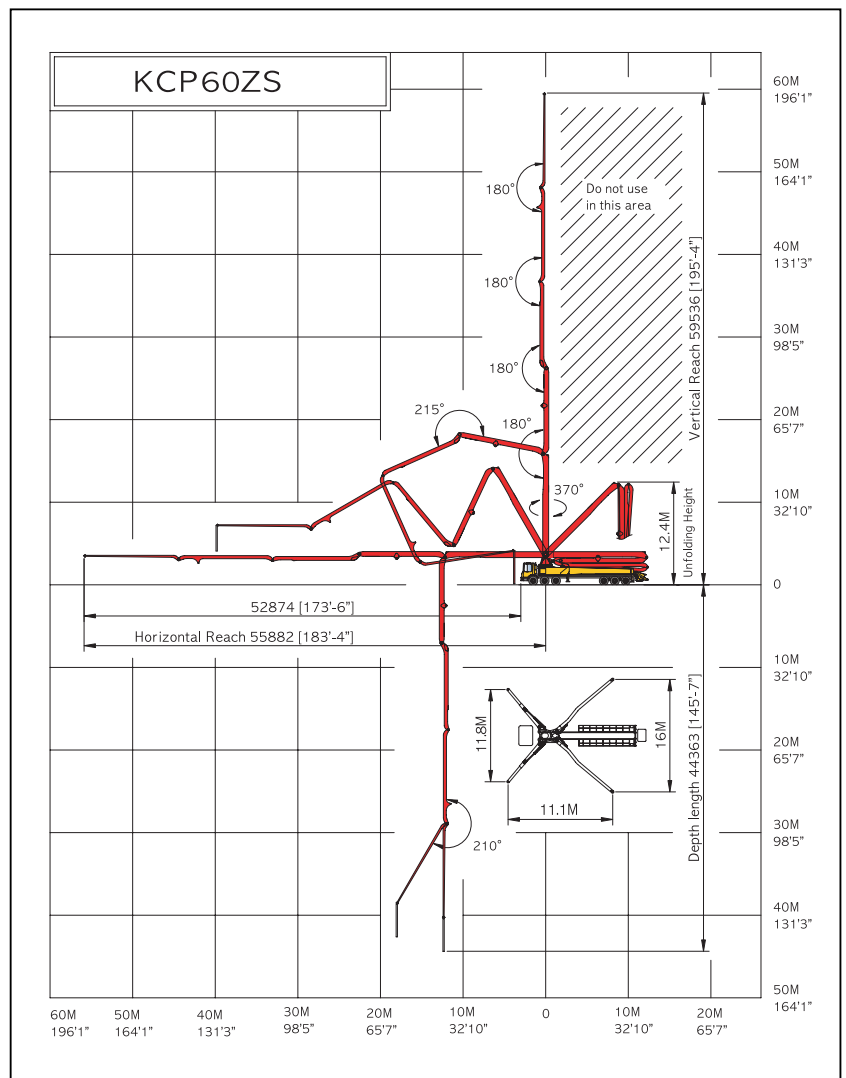
Maximum output	225 m ³ /h	(300 yd ³ /h)
Concrete cylinder	Ø280×2100 mm	(11"×83")
Stroke per minute	29	
Concrete pressure(rod)	87,5 bar	(1270 psi)
Hopper capacity	0,6 m ³	(21 ft ³)
S-tube	Ø220×Ø180	(9"×7")
Hydraulic pump	Rexroth A20VLO190	
Cycling system	Hydraulic with manual overrides	
Max aggregate size	60 mm	(2 1/2")

※ maximum theoretical values listed.

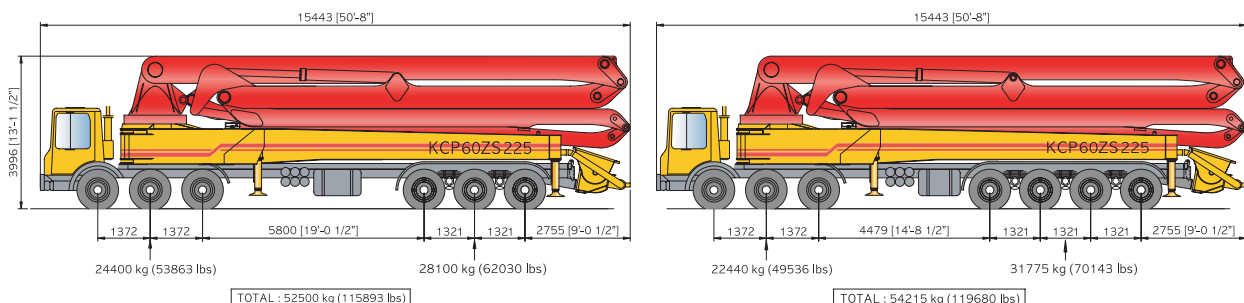
■ Truck mounted specifications

Available SCANIA, VOLVO, MERCEDES BENZ, MAN, IVECO, DAF, MAZ, ASTRA, MR MACK, FREIGHTLINER, HYUNDAI, DAEWOO, ...

■ Working diagram



■ Weight diagram



※ photos and drawings are for illustrative purpose only.

※ dimension will vary with different truck makes, models and specifications.

※ right to make technical amendments reserved.