



### 48ZX200 – Optional

Maximum output	200 m <sup>3</sup> /h	(261 yd <sup>3</sup> /h)
Concrete cylinder	Ø280 × 2100mm	(11" × 83")
Stroke per minute	25.6	
Concrete pressure(rod)	87.5 bar	(1270 psi)
S-tube	Ø220 × Ø180	(9" × 7")
Hydraulic pump	Kawasaki K3V180DT	(Rexroth A20VLO190)

### Boom specifications

Vertical reach	47.1 M	(154' 6")
Horizontal reach	43.3 M	(142')
Reach from front of truck	40.2 M	(132')
Unfolding height	10.6 M	(34' 8")
Section articulation	92° / 180° / 225° / 180° / 210°	
Rotation	370°	
Delivery line	125 mm	(5")
Proportional boom	Yes	
End hose length	4 M	(13')
Outrigger spread-front	8.87 M	(29' 1")
Outrigger spread-rear	10.1 M	(33')
Max outrigger weight	33,500 kg	(73950 lbs)

### Pump specifications

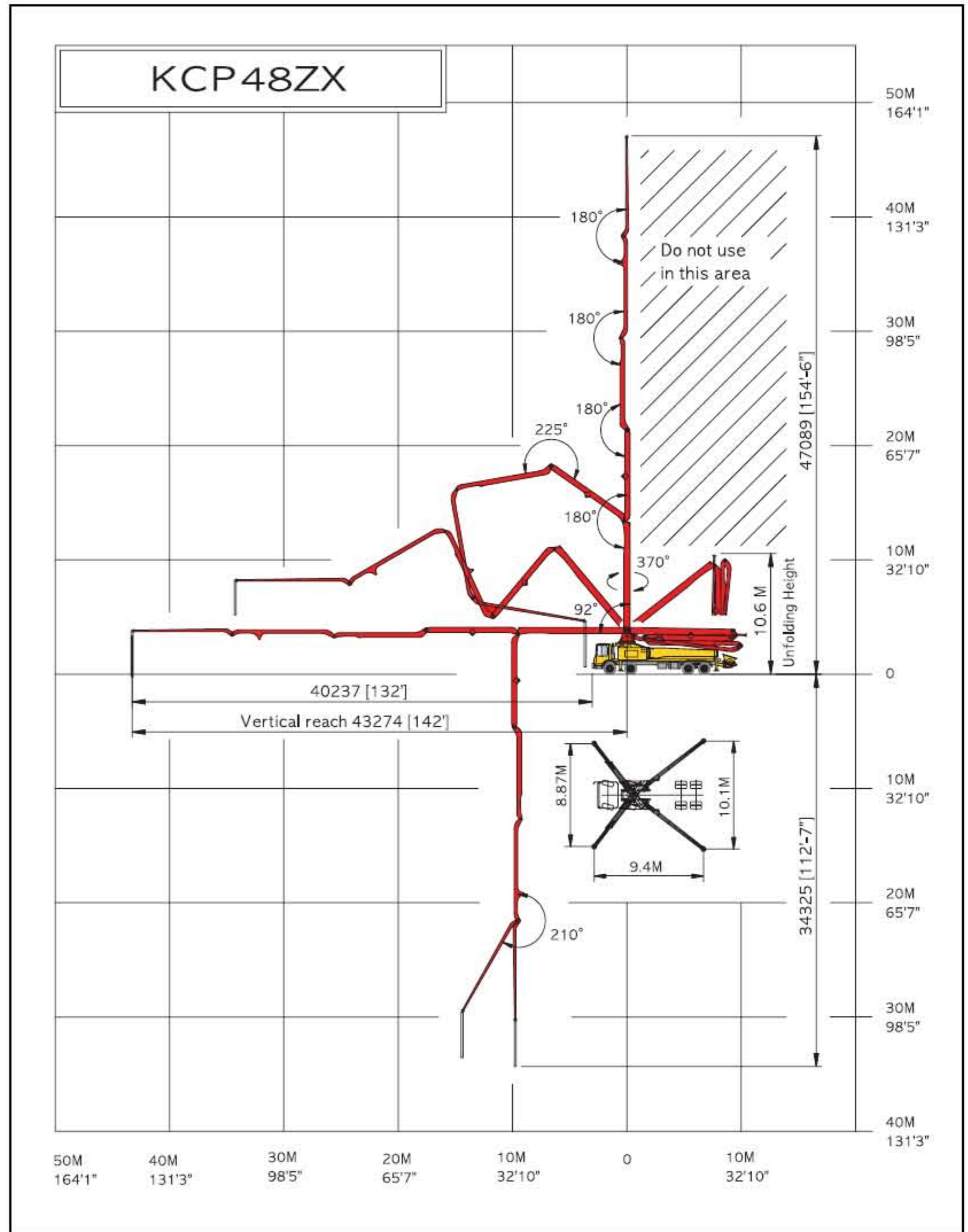
Maximum output	170 m <sup>3</sup> /h	(222 yd <sup>3</sup> /h)
Concrete cylinder	Ø230 × 2100mm	(9" × 83")
Stroke per minute	32	
Concrete pressure(rod)	72 bar	(1044 psi)
Hopper capacity	0.6 m <sup>3</sup>	(21 ft <sup>3</sup> )
S-tube	Ø200 × Ø180	(8" × 7")
Hydraulic pump	Kawasaki K3V140DT	(Rexroth A11VO260)
Cycling system	Hydraulic with manual overrides	
Max aggregate size	60 mm	(2 1/2")

※maximum theoretical values listed.

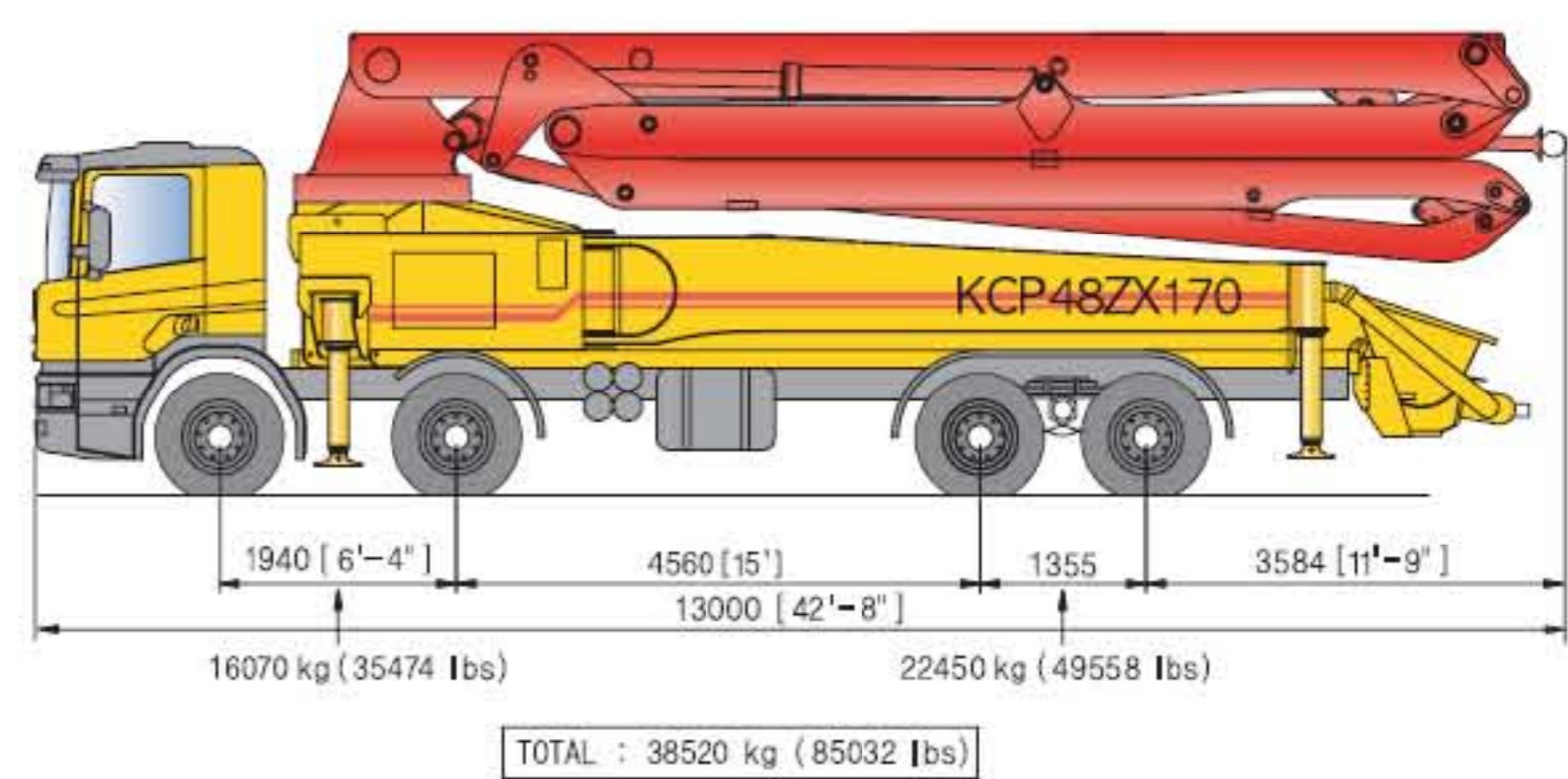
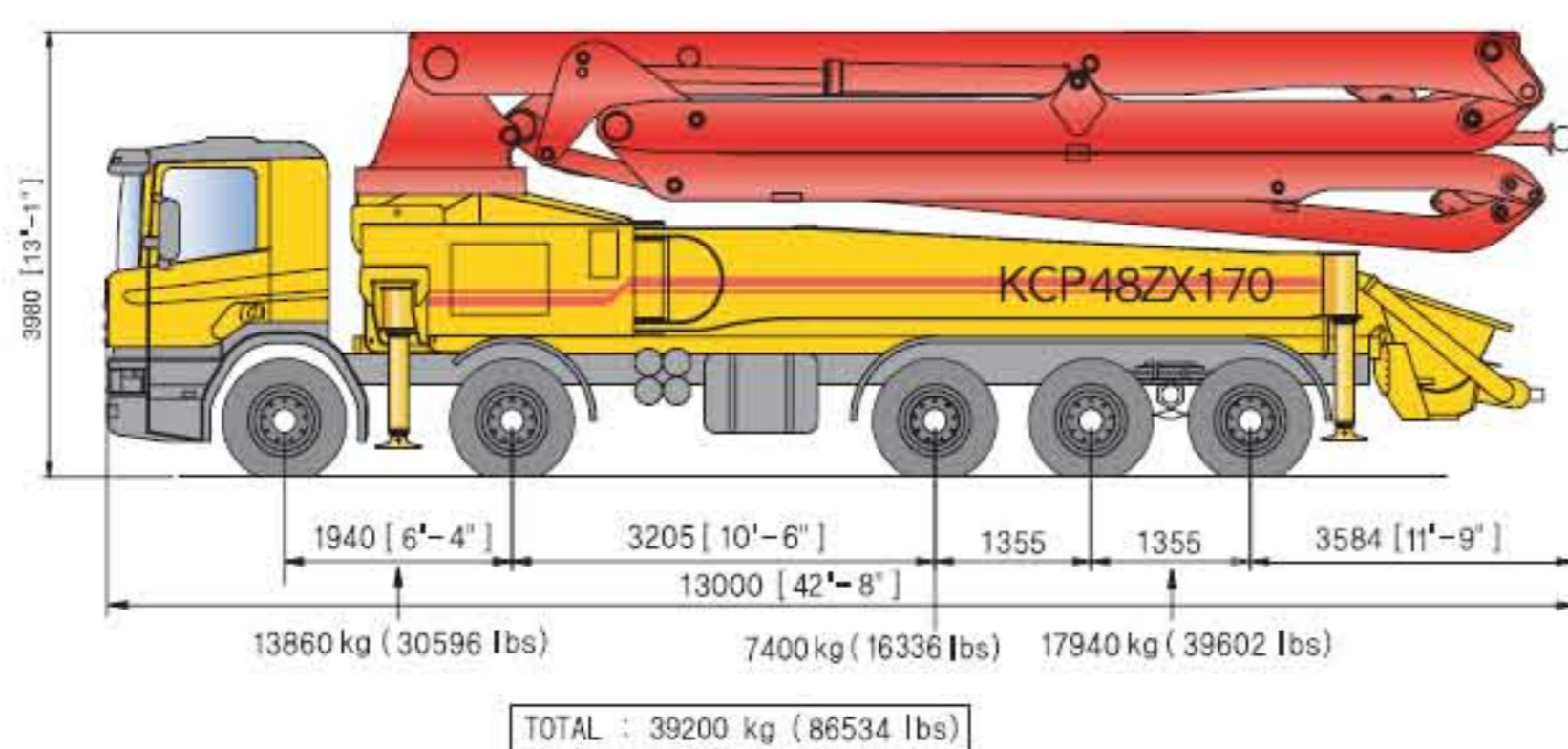
### Truck mounted specifications

Available SCANIA, VOLVO, MERCEDES BENZ, MAN, IVECO, DAF, MAZ, ASTRA, MR MACK, FREIGHTLINER, HYUNDAI, DAEWOO,...

### Working diagram



### Weight diagram



※photos and drawings are for illustrative purpose only.  
 ※dimension will vary with different truck makes, models and specifications.

※right to make technical amendments reserved.