

KCP38ZX170



■ Boom specifications

Vertical reach	37.8 M	(123' 9")
Horizontal reach	34 M	(111' 7")
Reach from front of truck	31.6 M	(103' 6")
Unfolding height	9.5 M	(30' 10")
Section articulation	94 ° / 180 ° / 250 ° / 245 °	
Rotation	370 °	
Delivery line	125 mm	(5")
Proportional boom	Yes	
End hose length	4 M	(13')
Outrigger spread-front	6.18 M	(20' 3")
Outrigger spread-rear	7.15 M	(23' 5")
Max.outrigger weight	21,500 kg	(47460 lbs)

■ Pump specifications

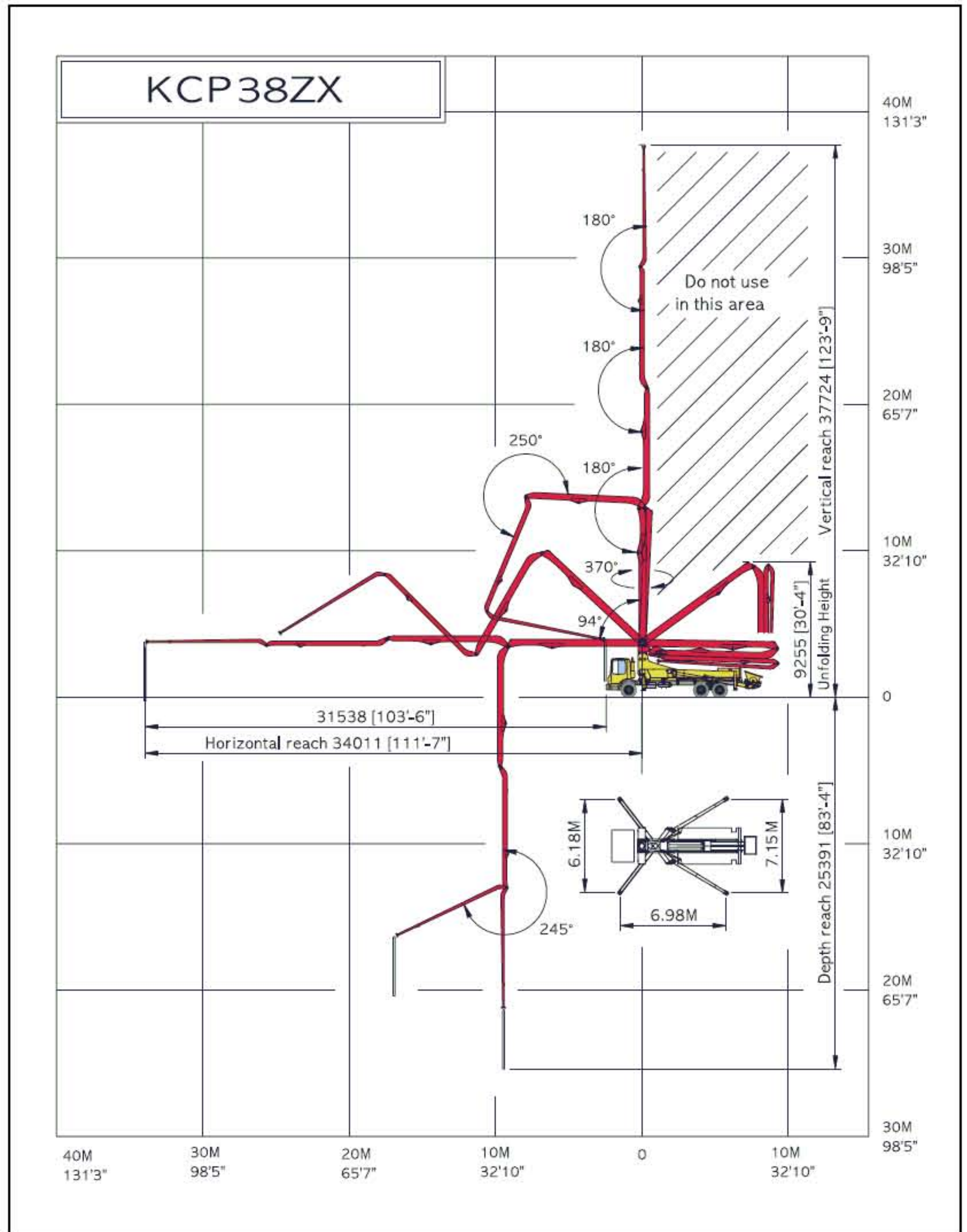
Maximum output	170 m ³ /h	(222 yd ³ /h)
Concrete cylinder	Ø230x2100 mm (9"x83")	
Stroke per minute	32	
Concrete pressure(rod)	72 bar	(1044 psi)
Hopper capacity	0.6 m ³	(21 ft ³)
S-tube	Ø200xØ180 (8"x7")	
Hydraulic pump	Kawasaki K3V140DT (Rexroth A11VO260)	
Cycling system	Hydraulic with manual overrides	
Max aggregate size	60 mm	(2 1/2")

※ maximum theoretical values listed.

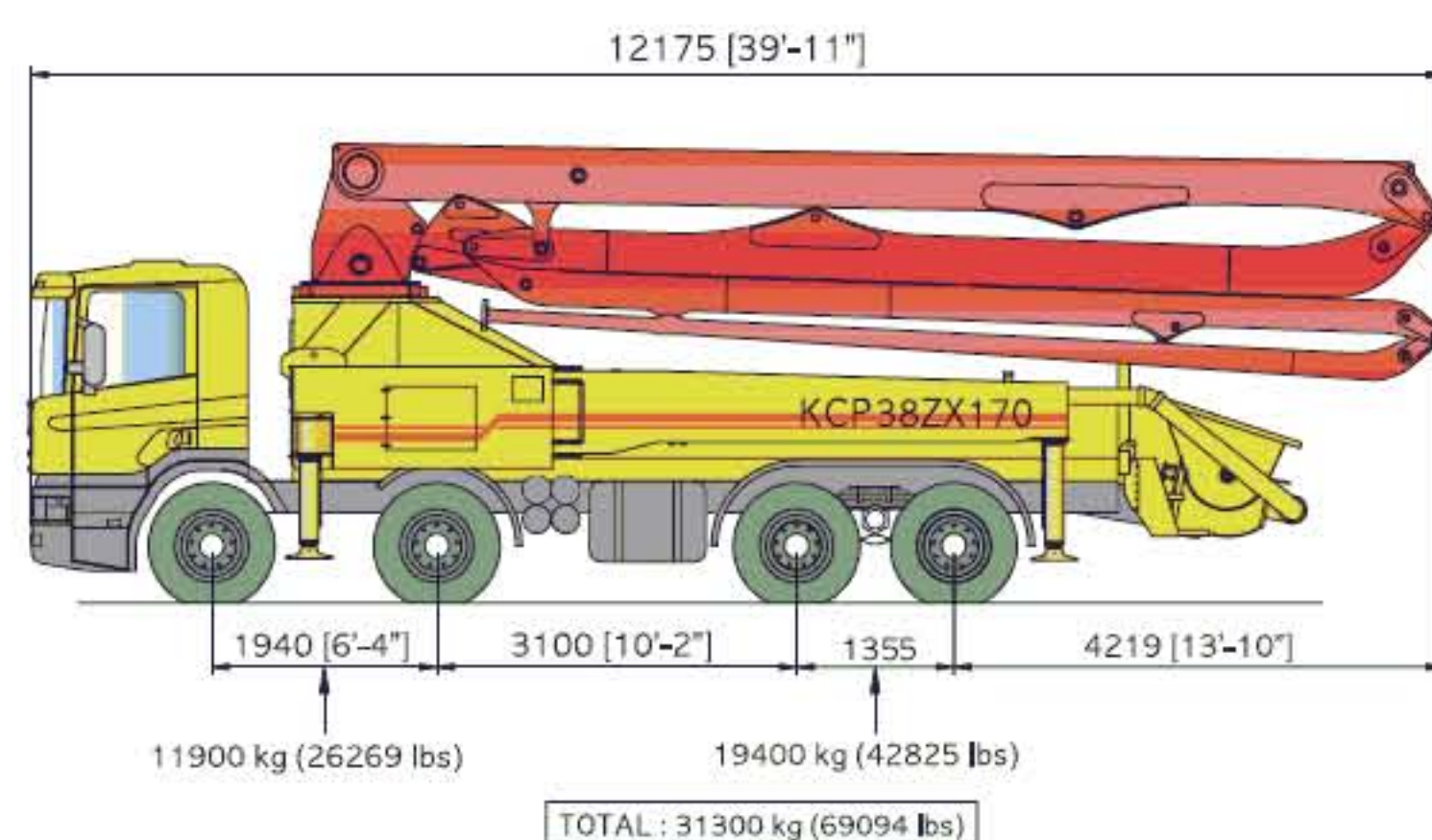
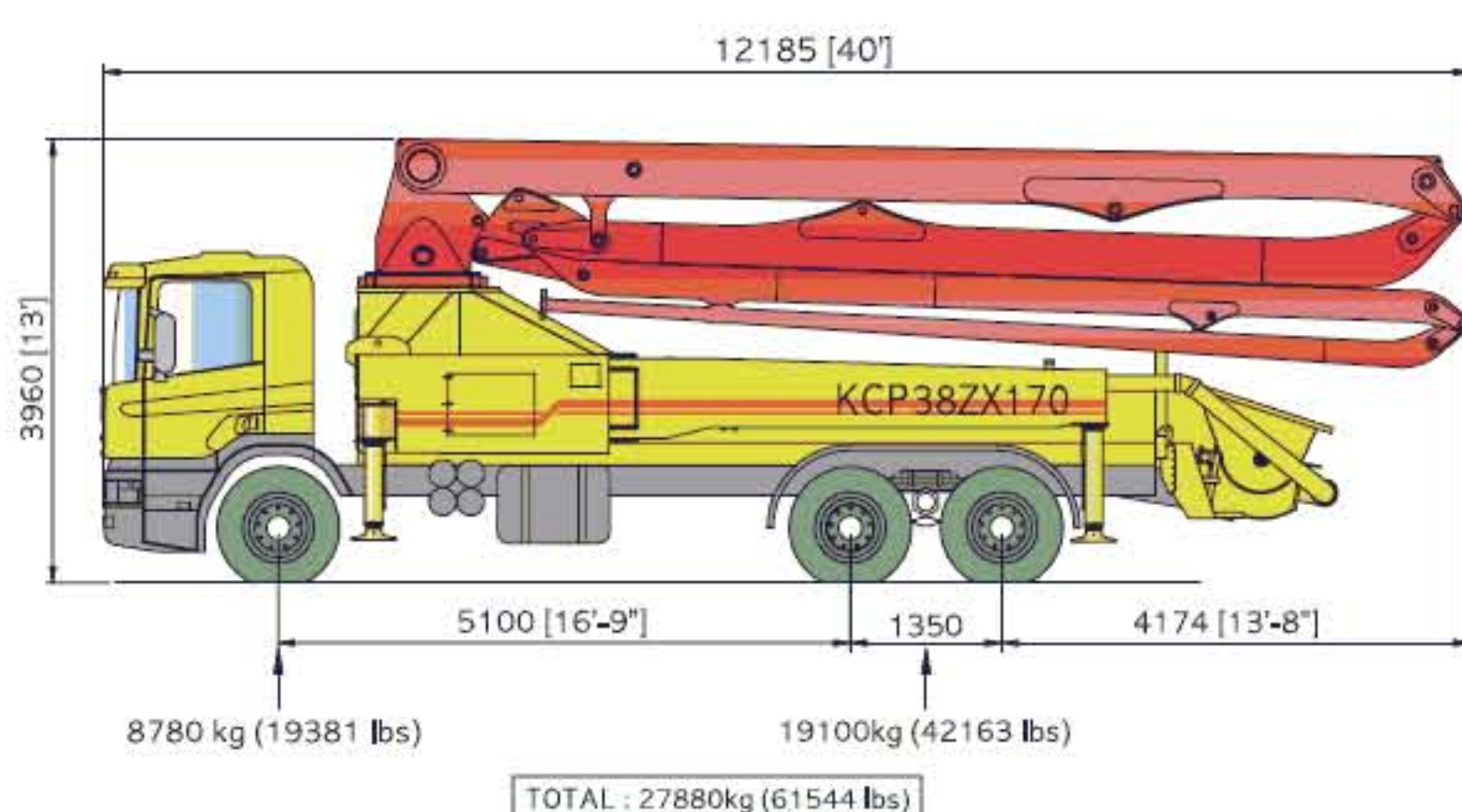
■ Truck mounted specifications

Available SCANIA, VOLVO, MERCEDES BENZ, MAN, IVECO, DAF, MAZ, ASTRA, MR MACK, FREIGHTLINER, HYUNDAI, DAEWOO, ...

■ Working diagram



■ Weight diagram



※photos and drawings are for illustrative purpose only.
 ※dimension will vary with different truck makes,models and specifications.

※right to make technical amendments reserved.