



### ■ Boom specifications

Vertical reach	37.9 M	(124' 3")
Horizontal reach	34 M	(111' 8")
Reach from front of truck	31.6 M	(103' 9")
Unfolding height	9.4 M	(30' 10")
Section articulation	94° / 180° / 240° / 245°	
Rotation	370°	
Delivery line	125 mm	(5")
Proportional boom	Yes	
End hose length	4 M	(13')
Outrigger spread-front	6.18M	(20' 3")
Outrigger spread-rear	7.15M	(23' 5")
Max outrigger weight	21,500 kg	(47460 lbs)

### ■ Pump specifications

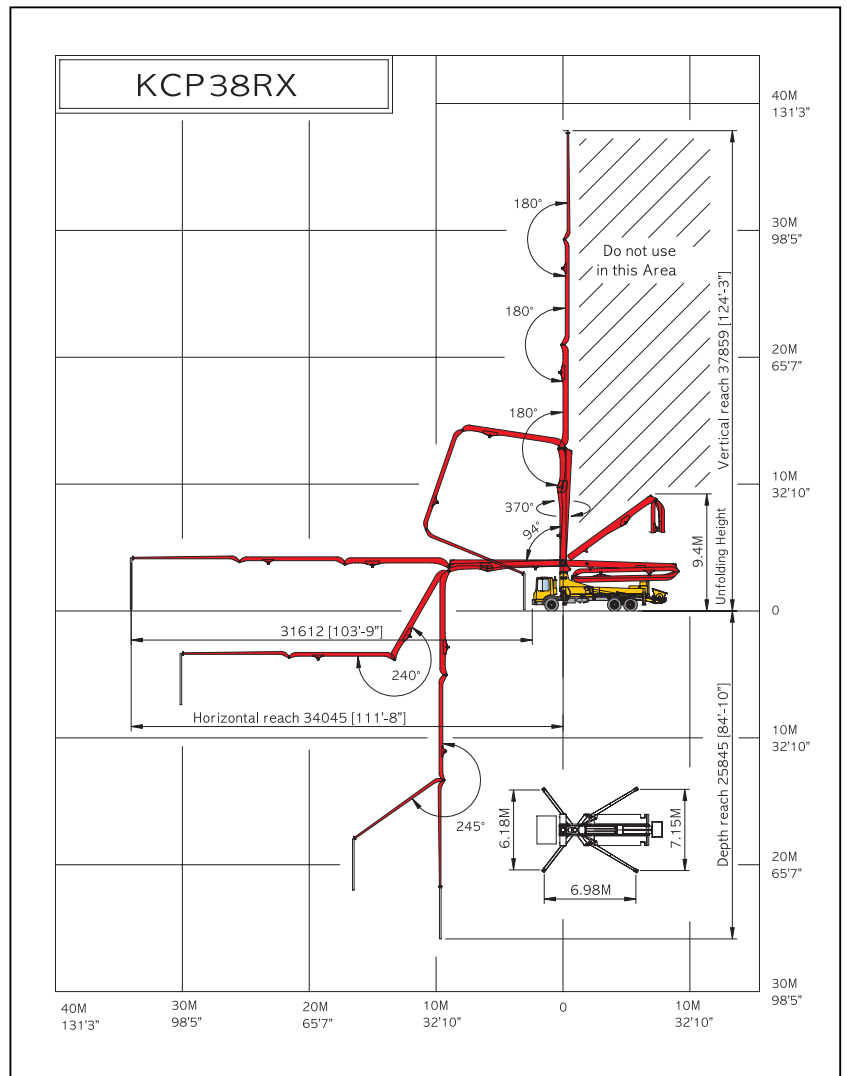
Maximum output	170 m <sup>3</sup> /h	(222 yd <sup>3</sup> /h)
Concrete cylinder	Ø230×2100mm (9"×83')	
Stroke per minute	32	
Concrete pressure(rod)	72 bar	(1044 psi)
Hopper capacity	0.6 m <sup>3</sup>	(21 ft <sup>3</sup> )
S-tube	Ø200×Ø180 (8"×7")	
Hydraulic pump	Kawasaki K3V140DT (Rexroth A11VO260)	
Cycling system	Hydraulic with manual overrides	
Max aggregate size	60 mm	(2 1/2")

※maximum theoretical values listed.

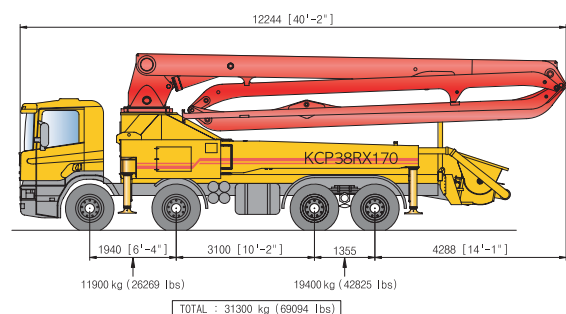
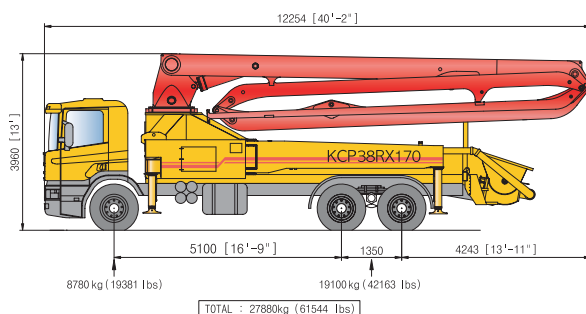
### ■ Truck mounted specifications

Available SCANIA, VOLVO, MERCEDES BENZ, MAN, IVECO, DAF, MAZ, ASTRA, MR MACK, FREIGHTLINER, HYUNDAI, DAEWOO,...

### ■ Working diagram



### ■ Weight diagram



※photos and drawings are for illustrative purpose only.

※dimension will vary with different truck makes, models and specifications.

※right to make technical amendments reserved.