

# KCP36ZX170



## ■ Boom specifications

Vertical reach	35,7 M	(117' 2" )
Horizontal reach	32 M	(105' )
Reach from front of truck	29,5 M	(96' 11" )
Unfolding height	9,3 M	(30' 6" )
Section articulation	94 ° / 180 ° / 250 ° / 245 °	
Rotation	370 °	
Delivery line	125 mm	(5")
Proportional boom	Yes	
End hose length	4 M	(13' )
Outrigger spread-front	6.18 M	(20' 3" )
Outrigger spread-rear	7.15 M	(23' 5" )
Max outrigger weight	20,500 kg	(45250 lbs)

## ■ Pump specifications

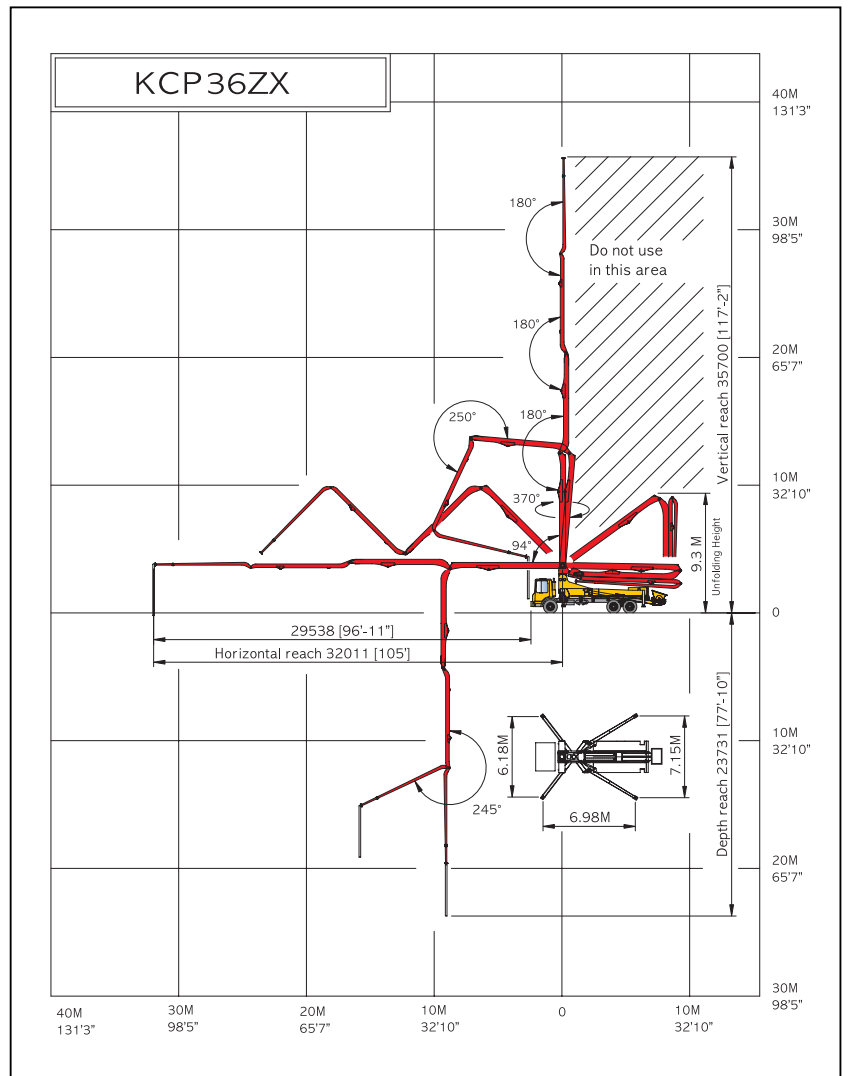
Maximum output	170 m <sup>3</sup> /h	(222 yd <sup>3</sup> /h)
Concrete cylinder	Ø230×2100mm (9"×83')	
Stroke per minute	32	
Concrete pressure(rod)	72 bar	(1044 psi)
Hopper capacity	0.6 m <sup>3</sup>	(21 ft <sup>3</sup> )
S-tube	Ø200×Ø180 (8"×7" )	
Hydraulic pump	Kawasaki K3V140DT (Rexroth A11VO260)	
Cycling system	Hydraulic with manual overrides	
Max aggregate size	60 mm	(2 1/2" )

※ maximum theoretical values listed.

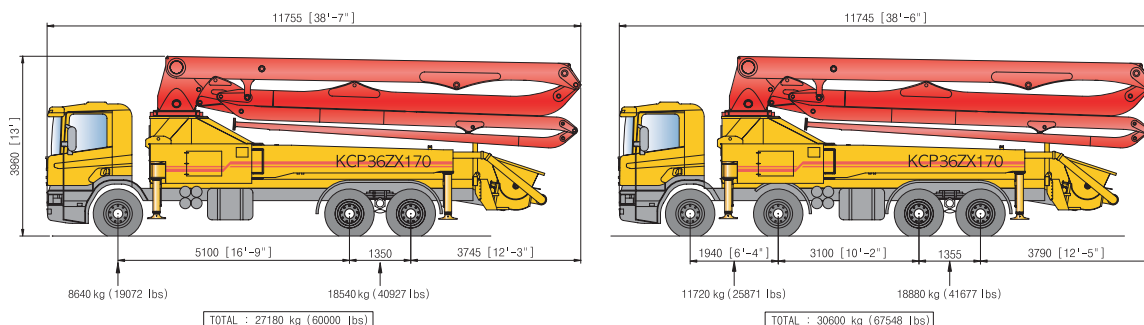
## ■ Truck mounted specifications

Available SCANIA, VOLVO, MERCEDES BENZ, MAN, IVECO, DAF, MAZ, ASTRA, MR MACK, FREIGHTLINER, HYUNDAI, DAEWOO, ...

## ■ Working diagram



## ■ Weight diagram



※ photos and drawings are for illustrative purpose only.

※ dimension will vary with different truck makes, models and specifications.

※ right to make technical amendments reserved.